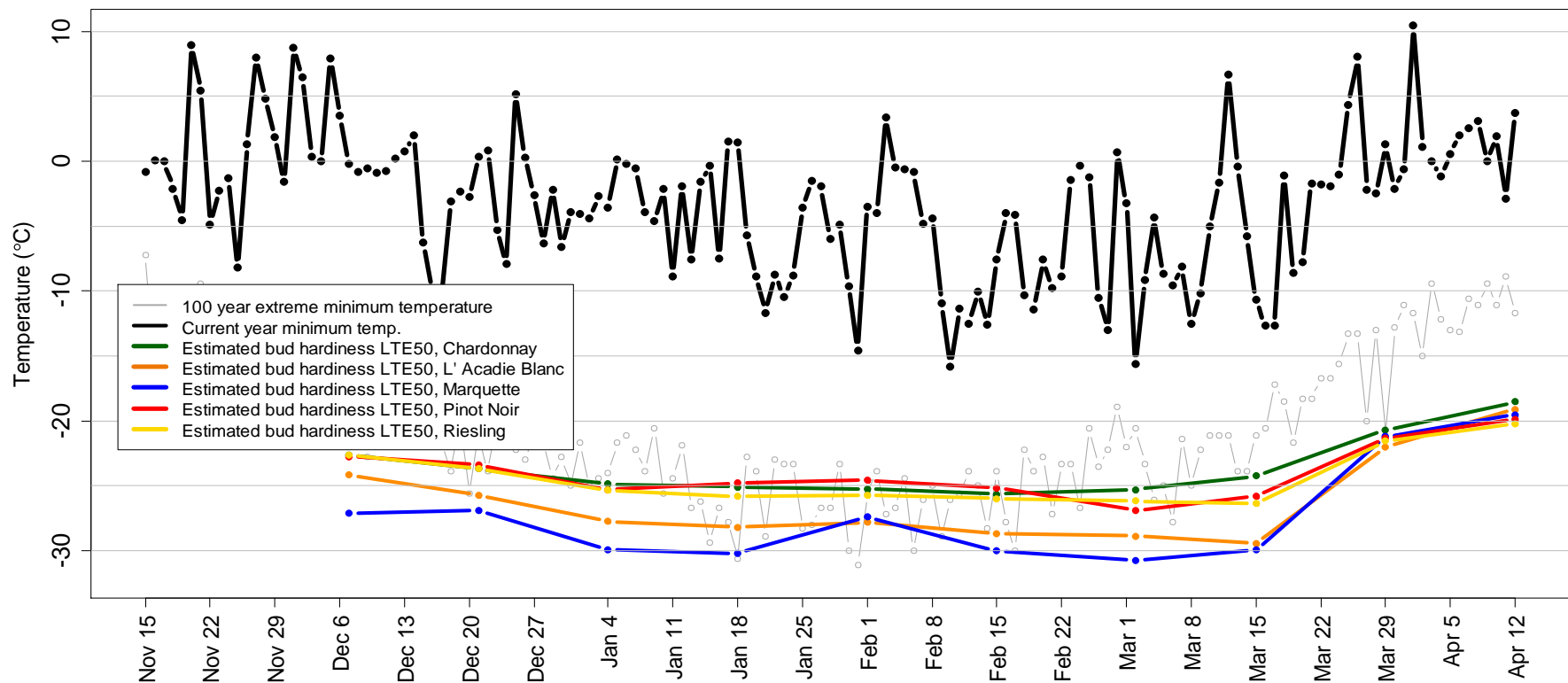


## Kentville Research & Development Centre (KRDC) – Nova Scotia wine grape bud hardiness 2020/2021 Report no. 10: April 12 – 13

Prepared by Jeff Franklin ([jeff.franklin@canada.ca](mailto:jeff.franklin@canada.ca)) and Dr. Harrison Wright ([harrison.wright@canada.ca](mailto:harrison.wright@canada.ca)), Plant Physiology Program, KRDC, Agriculture and Agri-Food Canada (AAFC) / Government of Canada; 32 Main St, Kentville, Nova Scotia, B4N 1J5.



**Figure 1.** Plot showing the LTE50 values (coloured lines) for five wine grape varieties taken from Nova Scotia vineyards, as well as recent and historical temperature trends. Current observed minimum temperatures (black line) as well as the 100 year minimum temperatures (grey line) were recorded at the Kentville Research and Development Centre.



### Current biweekly report

Grape buds in our growing region continue to deacclimate, but the pace has slowed since our last survey. On average, LTE50 values are -19.4 °C, with much less spread between the varieties than was observed throughout the winter. Temperatures have been close to seasonal in the last two weeks, which may be responsible for the slowed pace of deacclimation; above average temperatures in March resulted in some early accumulated growing degree days. Degree day accumulations for this year are similar to those seen in the years of 2010 and 2012. On both of these years bud break for red hybrid varieties began in early May. The current two week forecast predicts a return to above average temperatures. We will be taking our final bud hardiness survey in the week of April 26<sup>th</sup>, which will give us an estimate of the impact of this latest round of warm temperatures on bud hardiness.

**Table 1.** LTE10, LTE50 and LTE90 average values (°C) for core wine grape cultivars, for current and previous reporting periods

Core cultivars and sites	February 15 - 17			March 1 - 3			March 15 - 16			March 29 - 30			April 12 - 13		
	LTE10	LTE50	LTE90	LTE10	LTE50	LTE90	LTE10	LTE50	LTE90	LTE10	LTE50	LTE90	LTE10	LTE50	LTE90
Chardonnay (6 sites)	-20.3	-25.6	-27.9	-21.2	-25.3	-27.5	-20.3	-24.3	-27.0	-16.8	-20.7	-22.8	-15.4	-18.5	-20.3
L'Acadie Blanc (7 sites)	-26.2	-28.7	-31.2	-26.0	-28.9	-31.2	-24.6	-29.4	-30.9	-17.8	-22.0	-24.9	-16.4	-19.1	-20.8
Marquette (3 sites)	-27.9	-30.0	-32.8	-26.1	-30.7	-31.8	-25.6	-29.9	-32.8	-15.7	-21.2	-23.7	-16.5	-19.5	-21.2
Pinot Noir (3 sites)	-20.9	-25.2	-27.8	-22.9	-26.9	-28.5	-21.9	-25.8	-28.6	-18.1	-21.4	-24.2	-17.6	-19.9	-21.2
Riesling (5 sites)	-20.5	-26.0	-29.0	-20.3	-26.2	-28.6	-19.5	-26.4	-28.5	-19.1	-21.6	-24.2	-18.0	-20.2	-21.6



### Research report description

The Nova Scotia wine grape bud hardiness survey generates a biweekly report of the low temperature exotherm (LTE) values over the dormant period (roughly from late October to late April). The LTE is the temperature (°C) at which a bud freezes and is killed: LTE10, LTE50 and LTE90 values denote the temperatures at which 10%, 50% and 90% of the viable buds freeze. The LTE values for a given variety and site are generated using five canes obtained from five vines; the compound buds from nodes 3 through 7 from each cane are measured via differential thermal analysis (DTA). It is important to note that the LTE value denotes a bud's susceptibility to acute, cold temperature damage; it does *not* necessarily reflect the bud's susceptibility to dehydration, poor vine health and other more chronic forms of stress that can result in bud mortality at temperatures above the LTE values.

Each report includes: (1) a plot showing the median LTE50 values for a group of hybrid and vinifera wine grape cultivars averaged over several sites located in Kings, Annapolis, Digby and Lunenburg counties as well as recent and historical minimum temperature trends (Figure 1); (2) comments on the current reporting period; (3) a table of LTE10, LTE50 and LTE90 values for the same cultivars shown in Figure (Table 1). This report is produced by the KRDC Plant Physiology Program. Funding for this work is through an AgriScience Program Cluster project (J-001930, "ASC-12 Grape Wine Cluster Activity 7 - Grapevine evaluation and cold hardiness program to ensure superior plant material for the Canadian Grapevine Certification Network and to improve the sustainability of the Canadian Grape and Wine Industry"). If you have any questions or comments, please feel free to reach out to the KRDC Plant Physiology Program using the contact information listed above. This report, and others, can be found on the Canadian Grape Certification Network (CGCN) webpage <https://www.cgcn-rcv.ca/site/cold-hardiness-and-climate-change>.

© Her Majesty the Queen in Right of Canada, represented by the Minister of Agriculture and Agri-Food (2021).