

# The horrors of cranberry and cherry fruitworm in blueberries

Erika Bent

APM Agricultural Pest Monitoring  
Consulting Ltd.

# Why horrors?

-August 2015

-Cranberry  
fruitworm larvae  
and lots of frass

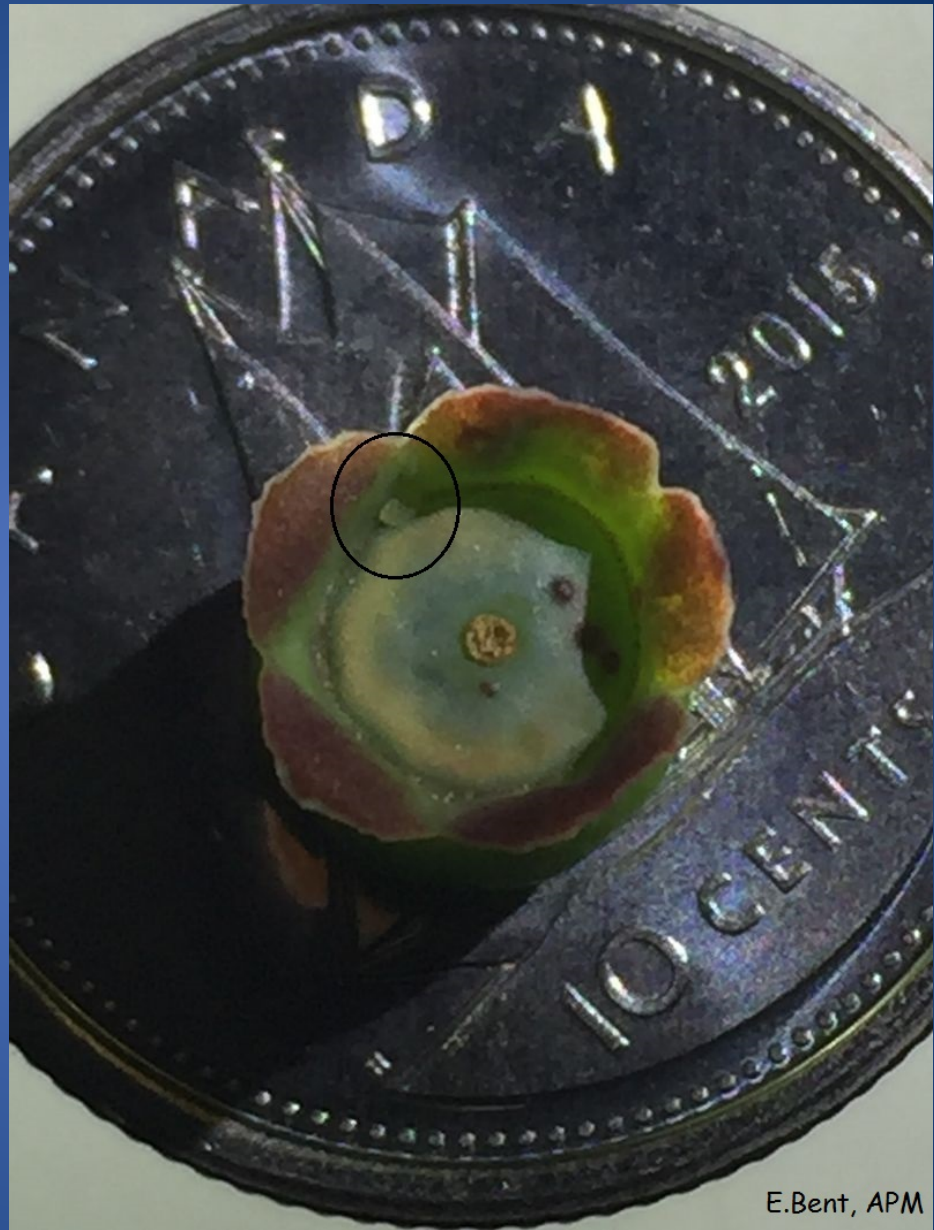
-Isolated to one  
field



E. Bent, APM

# 2016

- pheromone traps to determine peak flight
- moths are small and brown/black
- nocturnal
- eggs are laid on the green berries and the first egg was found on June 22
- larva emerge and tunnel into the berry



E.Bent, APM



# Cranberry fruitworm

- larva move from berry to berry
- frass and webbing found outside the berries
- berries tend to turn blue early
- larvae overwinter at base of plants
- one generation per season



E. Bent, APM

# Cherry fruitworm

- similar type of damage
- pinkish larvae feed inside berries
- no visible frass and/or webbing
- one generation per season



E. Bent, APM



# 2017

- larvae found in early July
- throughout the Valley
- both cranberry and cherry fruitworm
- early August I found a few empty pupal cases so ...



E. Bent, APM

# IPM practices

- monitor adult flight with pheromone traps
- monitor for eggs; need a good 10X lens or microscope
- monitor for larvae
- refer to the Highbush Blueberry Management Schedule for control options
- remember the bees and beneficial insects when applying an insecticide

